



Eagle Hill Community Programs

November 4 - November 6



Friday, November 4

Film 7:00 PM - **Last Train Home** (2009) NR 87 min

Documentarian Lixin Fan follows a couple who, like 130 million other Chinese peasants, left their rural village for work in the city, leaving their children to be raised by grandparents. The husband and wife return only once each year, on an arduous 1,000-mile journey. But their homecoming is not a warm one, as their now teenage daughter, Qin, makes her bitter resentment known and debates pursuing a factory job herself.

- Trails and Library - Open 4 PM
- Afternoon tea/coffee - 4 PM
- Film - 7 PM (\$3 suggested donation)

Saturday, November 5

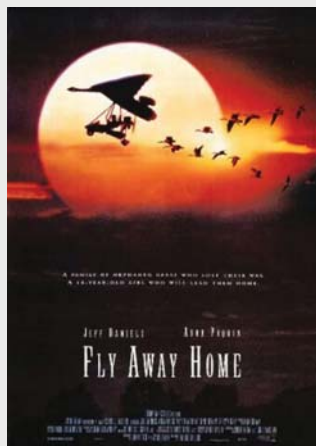
Lecture 7:00 PM - **Ecology and conservation of Shorebirds - Our Globe-Trotting Migrants**



Lindsay Tudor will discuss shorebird life history, their phenomenal migration from arctic breeding grounds to South American wintering areas, current population status, and conservation. Descriptions of Maine shorebird habitats and the vital role they play during shorebird migration will be discussed along with Maine's shorebird management program including recent habitat protection initiatives under the Natural Resources Protection act.

- Trails and Library - Open 2 PM
- Afternoon tea/coffee - 4 PM
- Lecture - 7 PM (\$5 contribution)

Lindsay Tudor is biologist with Maine Inland Fisheries and Wildlife. She started with the agency in 1985. In 1991, Lindsay became a nongame bird specialist in the bird group, focusing on conservation planning, inventory, research, and outreach for primarily shorebirds, least terns, and harlequin ducks.



Sunday, November 6

Film 7:00 PM - **Fly Away Home** (1996) PG 107 min

When 13-year-old Amy Alden adopts a flock of orphaned Canada geese, she sets out to teach them survival skills. Before long, Amy and her inventor dad take to the skies in a homemade ultralight aircraft to help the gaggle migrate 500 miles.

- Trails and Library - Open 2 PM
- Afternoon tea/coffee - 4 PM
- Film - 7 PM (\$3 suggested donation)

A variety of bottled beverages are now available.