

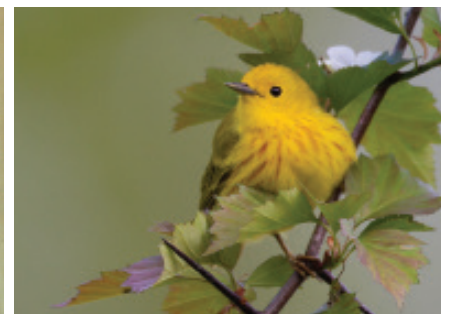
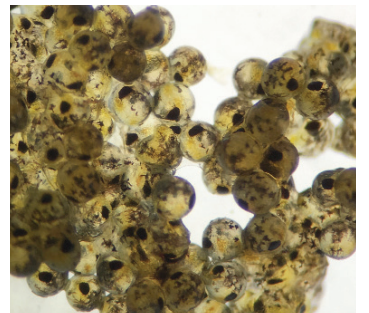


THE
NORTHEAST

NATURAL HISTORY
 CONFERENCE



2 0 1 7



SAT MORNING	SATURDAY APRIL 22, 2017			
7:00–5:00	Conference Registration Open			
7:00–8:00	Set up for exhibitors			
8:00	Exhibitions Open			
7:30–8:30	Set up for Day 1 scientific posters			
7:45–8:30	PowerPoint preview/technology check for oral presentations - in the room your talk will be given			
8:30–10:00	Concurrent Sessions - Morning I			
	Room C	Room D	Room E	Room F
	By the Water's Edge: Floodplain Restoration, Urban Wetlands, and Lake Pollution	Terrestrial Botany and Plant Ecology I	Terrestrial Insect Ecology, Conservation, and Natural History I	Pitch Pine Forests of New England
Moderator	Erik Kiviat	John Burns	Rob Clark & Michael Singer	Christopher Martin
8:30–8:35	Introduction & Overview	Introduction & Overview	Introduction & Overview	Introduction & Overview
8:35–8:55	Danielle Garneau Microplastic Pollution in Lake Champlain	Richard Gardner Using Ecological Utility to Define Native Plants	Michael Singer Forest Caterpillars: How Dietary Specialization Mediates Their Susceptibility to Predators	Emery Gluck Historical Occurrence and Uses of Pitch Pine in New England
8:55–9:15	Erik Kiviat Flora and Vegetation of an Industrial Area in the New Jersey Meadowlands	Sarah Bois It's All in the Timing; Investigating Species-specific Phenological Strategies of Dominant Temperate Shrubs	Brigette Zacharczenko What's Really on the Menu? An Evaluation of Host-Plant Literature and Diet Breadth of Caterpillars	Adrian Arango Southern Pine Beetle Expansion into Pitch Pine Areas
9:15–9:35	Matthew Opdyke Wetland Plant Succession in a Restored Floodplain	Lori Petruski Changes in Flowering Phenology Over 125 Years in the Central Appalachians	Peter Burn Putting all your Eggs in a Small Number of Baskets: Daily Occurrence of Operophtera (Lepidoptera: Geometridae) in Carlisle, MA, 2012–2016	Claire Rutledge Southern Pine Beetle in Connecticut: Discovery, and Distribution
9:35–9:55	Q & A	Karro Frost Mapping the Invasive Vine Hardy Kiwi in Western Massachusetts	Victor Demasi A 23-year Field Study of Connecticut's 3 Most Common Swallowtail Butterflies: <i>Papilio glaucus</i> (Tiger Swallowtail), <i>Papilio troilus</i> (Spicebush Swallowtail), and <i>Papilio polyxenes</i> (Black Swallowtail)	Gerard Milne & Emery Gluck Using Silviculture to Perpetuate Pitch Pine Communities in Connecticut
9:55–10:00		Q & A	Q & A	Q & A
10:00–10:50	Morning Poster Session and Reception with light snacks & beverages			

Saturday Concurrent Sessions - Morning II				
	Room C	Room D	Room E	Room F
10:50-12:00	White-tailed Deer: Monitoring and Impacts	Ecology and Systematics of Ferns	Terrestrial Insect Ecology, Conservation, and Natural History II	Wildlife Forensics and Population Genetics
Moderator	Peter Palmiotto	Jack Tessier	Rob Clark & Michael Singer	Nicole Chinnici
10:50-10:55	Introduction & Overview	Introduction & Overview	Introduction & Overview	Introduction & Overview
10:55-11:15	Kira Broz How White-tailed Deer Overabundance Changes Plant Communities: Baseline Exclosure Data and Methodologies	Jack Tessier Fronds of <i>Dryopteris intermedia</i> Need to be Prostrate to Reduce Winter Damage	Samantha Sawyer Behavioral Response of <i>Nasonia vitripennis</i> (Hymenoptera) when Exposed to Different Species of Carrion	Michelle Kraczkowski Post-glacial Colonization Path of the Blacknose Dace into Northeastern North America
11:15-11:35	Christopher Johnson Evaluating the Accuracy of Camera Trapping Methods for Open Populations of White-tailed Deer	Joanne Sharpe Annual Variation in Plant and Leaf Characteristics of Three Common Ferns of the Northeastern Forest	Rob Clark Food Resources Alter the Community Composition of Arboreal-Foraging Ants in Temperate Forests	T.J. McGreevy Conservation Genetic and Genomic Tools to Inform Management Decisions for New England Cottontail
11:35-11:55	Hana Kiewicz-Schlansker Controlling Deer and Beech: Testing the Effectiveness of Fencing, Herbicide, and Mechanical Treatments in Patch Cuts of Northern Hardwood Forest, Gilsum, NH	Susan Fawcett Biogeography, Taxonomy, and Evolutionary Affinities of Northeastern Thelypteridaceae	Jennifer Apple Raids and Relocations: Insights from Long-term Monitoring of Interactions Between Slavemaking Ants and Their Hosts	Christopher O'Brien The Future of Wildlife Forensic Education: Connecting the Needs of Working Labs with Research Students
11:55-12:00	Q & A	Q & A	Q & A	Q & A
12:00-1:30	Lunch (included for those who pre-registered for the conference)			

SAT AFTER LUNCH	SATURDAY APRIL 22, 2017				
1:10-1:30	PowerPoint preview/technology check for oral presentations - in the room your talk will be given				
1:30-3:30	Concurrent Sessions - Afternoon I				
	Room C	Room D	Room E	Room F	Room J
	Herbarium Collections: A Resource for 21st Century Botany, Ecology, and Conservation	Conservation and Ecology of Reptiles and Amphibians I	Conservation Lessons and Ecological Research from Afar: Global-scale Biodiversity Conservation	Aquatic Plant Distribution and Conservation	Discoveries in New England Freshwater and Marine Animals
Moderator	Timothy Whitfeld & Patrick Sweeney	Brian Bastarache	Thilina Surasinghe	Matt Hickler	Tom Trott
1:30-1:35	Introduction & Overview	Introduction & Overview	Introduction & Overview	Introduction & Overview	Introduction & Overview
1:35-1:55	Patrick Sweeney The Consortium of Northeastern Herbaria: Facilitating Research and Conservation	Anne Stengle Conservation of the Timber Rattlesnake in Massachusetts	Gene Albanese A Network Model Framework for Prioritizing Wetland Conservation in the Great Plains: Toward a Theory of Connectivity among Ephemeral Depressional Wetlands	Robert Naczi Conservation of Hudson River Intertidal Plants: Current Status, Threats, and Recommendations	Harry Meyer New England Terrestrial Water Bears
1:55-2:15	Mason Heberling Old Collections with New Uses: The Roles of Herbaria in the Anthropocene	Jacob Kubel Monitoring Eastern Spadefoot in New England: Design and Early Results of the Massachusetts Plan	Thomas Philbrick Neotropical Riverweeds (Podostemaceae): Confusing Taxonomy Obscures Extinction Threats	Eric Hellquist Forty Years of Change in the Vascular Aquatic Flora of Ossipee Lake, NH	Emma Perry The Distribution of Marine Tardigrades in the Intertidal Zone of Allen Island, Maine
2:15-2:35	Robert Jarvis Using Herbarium Specimens to Document Phenological Change in Central NY Woodland Plants	George Bancroft & Justin daSilva Initial Assessments of Anuran Communities at Southeastern Massachusetts Sites	Hans Gonzembach The Effects of Human Encroachment On Shorebird Nests	Matt Hickler Lakes and Ponds of the Worcester Plateau Ecoregion: Patterns of Aquatic Plant Diversity and Species Distribution	Thomas Trott Feeding by <i>P. caudatus</i> (Cephalorhycha: Priapulidae): Effects of Seasonal Temperature Change and Molting
2:35-2:55	Robert Naczi Sharing Hidden Treasures: Digitization of Original Archival Materials Mounted on Herbarium Specimens	Kinga Stryszowska-Hill Species Distribution Modeling of the Threatened Blanding's Turtle (<i>Emydoidea blandingii</i>) in NY	William Langbauer Habitat Destruction by Elephants? Questionable Assumptions in Wildlife Management	Eric Hellquist Potamogetonaceae Hybrids of Northeastern United States	Christopher Bloch Environmental Correlates of Abundance and Impact of the Invasive Asian Shore Crab (<i>Hemigrapsus sanguineus</i>)
2:55-3:15	Sean Robinson The SUNY Virtual Herbarium Network: Increasing Access and Improving Botanical Education	Thomas Tying Wood Turtle Movements in a Small Berkshire Stream	Thilina Surasinghe Conservation of Sri Lankan Turtles: Population Status Outside the Protected Area Network	Sean Regalado Predicting the Presence/Absence of Eurasian Watermilfoil and Variable Leaf Milfoil in Adirondack Waters Using Freely Accessible GIS Data	Kelly Flanders Detecting Spiny Dogfish in Gray Seal Diets
3:15-3:20	Q & A	Q & A	Q & A	Q & A	Q & A
3:20-4:00	Afternoon poster session and reception with light snacks and beverages				

4:00–5:30	Saturday Concurrent Sessions - Afternoon II			
	Room C	Room D	Room E	Room F
	Strategy for Conserving Ash Trees in the Northeast	Floristic Studies I	Ecology of Bats	Old-Growth Forests of the Northeast
Moderator	Brian Boom	Scott Ward	Kathleen O'Connor	Bill Keeton
4:00–4:05	Introduction & Overview	Introduction & Overview	Introduction & Overview	Introduction & Overview
4:05–4:25	Brian Boom Conserving Ash Trees in the Northeastern United States: A Multi-disciplinary Approach	Richard Gardner Two Small-scale Landscape Models of Invasive Plant Spread	Katherine Moran State of the Bats in Connecticut	Charlie Canham Potential Expansion of Late Successional and Old-growth Stands in the Northern Forest Landscape under Current and Future Logging Regimes
4:25–4:45	Daniel Atha The Distribution of <i>Fraxinus profunda</i> (Pumpkin Ash) in New York	Daniel Waldhorn Using Remotely Sensed Data to Delineate Phragmites in the Hudson River	Carl Herzog White-nose Syndrome: The Future of Some Severely Affected Bat Species	Bill Keeton Old-growth Forests and Streams, and Managing Forests for Old-growth Characteristics
4:45–5:05	Julian Campbell A Provisional Reassessment of Taxonomic Variation among New England Ashes (Oleaceae: <i>Fraxinus</i>)	Emily Rollinson Partitioning the Effects of Concurrent Consequences of Floods in Riparian Plant Communities	Amanda Bailey Monitoring Northern Long-eared Bats on Long Island, NY	Audrey Barker-Plotkin Pits and Mounds: The Charismatic Microtopography of the New England Forest
5:05–5:25	Wildova Radka & Jonathan Rosenthal Monitoring and Managing Ash (MaMA): Working Together to address the Threat from EAB	Q & A	Kathleen O'Connor Lessons Learned from Teaching Acoustics	Greg McGee Epiphytic Bryophyte and Lichen Communities of Old-Growth Adirondack Northern Hardwood Forests
5:25–5:30	Q & A		Q & A	Q & A
5:30–6:00	Open Networking Session with cash bar and finger foods			
5:30–6:00	Take down for Day 1 scientific posters			
6:00	Plated dinner and socializing - ticketed event			

Saturday	NENHC 2017 Saturday Evening Workshops & Events
7:30–9:00 PM Room J	<p>Wildlife Forensics, led by Nicole Chinnici, Forensic Scientist, Northeast Wildlife DNA Laboratory, East Stroudsburg University</p> <p>This workshop will introduce wildlife biologists, state agencies, conservation officers, and others interested in wildlife forensics to the services offered by the Northeast Wildlife DNA Laboratory. It will address the knowledge, skills, and abilities needed for the proper processing of animal remains associated with a legal investigation. Topics will include sample collection, case submission, type of testing, database management and case studies. Also included in this workshop is a presentation on human–wildlife encounter protocols which focus on sample collection from the scene of a wildlife-human attack. Space limited. Pre-registration required.</p>
7:30–8:15 PM Room F	<p>The White Oak Effect on Mosses and Liverworts, led by Steve Messier, botanist and bryologist</p> <p>This presentation will explore the role White Oaks play in the distribution and abundance of mosses and liverworts in sandy soils of central Connecticut. Based on observations from a 2-year study in the Winding Trails forests in Farmington, questions arise as to why some bryophytes normally described as preferring moist and calcareous habitats should be found in acidic droughty soils. To address these questions, a few common forest trees will be compared in light of their stem flow and cation exchange properties. A brief discussion of White Oaks and "the fertile island effect" on other plant groups concludes the talk. Open to all. Pre-registration not required.</p>
7:30–9:00 PM Room E	<p>Film: The City Dark, followed by discussion on impacts of light pollution led by Leo Smith, Northeast Regional Director, International Dark Sky Association</p> <p>THE CITY DARK is a feature documentary about the loss of night. After moving to NYC from rural Maine, filmmaker Ian Cheney asks a simple question - do we need the stars? - taking him from Brooklyn to Mauna Kea, Paris, and beyond. Exploring the threat of killer asteroids in Hawaii, tracking hatching turtles along the Florida coast, and rescuing injured birds on Chicago streets, Cheney unravels the myriad implications of a globe glittering with lights - including increased breast cancer rates from exposure to light at night, and a generation of kids without a glimpse of the universe above. Featuring stunning astrophotography and a cast of eclectic scientists, THE CITY DARK is the definitive story of light pollution and the disappearing stars. The film will be followed by a time for Q & A and discussion of the issues raised. This film is a great prelude to the Ecological Consequences of Light Pollution session on Sunday morning. Open to all. Pre-registration not required.</p>
8:30 PM Room A	<p>Annual Meeting of the Consortium of Northeastern Herbaria (CNH)</p>

SUN MORNING	SUNDAY APRIL 23, 2017			
7:00-5:00	Conference Registration Open			
7:00-8:00	Set up for exhibitors			
8:00	Exhibitions Open			
7:30-8:30	Set up for Day 1 scientific posters			
7:45-8:30	PowerPoint preview/technology check for the presentations - in the room your talk will be given			
8:30-9:40	Concurrent Sessions - Morning I			
	Room C	Room D	Room E	Room F
	Non-Odonata Freshwater Invertebrates	Floristic Studies II	Ecological Consequences of Light Pollution	Earthworms and Mountains: The Little and Big Things that Shape our World
Moderator	Jay Cordeiro	Scott Ward	Leo Smith	Timothy McCay
8:30-8:35	Introduction & Overview	Introduction & Overview	Introduction & Overview	Introduction & Overview
8:35-8:55	Andrew Mcelwain Nacrezation of <i>Unionicola</i> sp. (Acari: Unionicolidae), and Metacercariae (Digenea) in <i>Elliptio complanata</i> (Bivalvia: Unionidae) from Oquaga Creek, New York	Jenifer Dickinson Defining Habitat Characteristics of Four Rare Alpine Plant Species in the Presidential Mountain Range, New Hampshire	Leo Smith Light Pollution and Its Ecological Impact	Larry Spencer An Analysis of the Role that Mt. Prospect Plays in the Pemigewasset Watershed, NH
8:55-9:15	Jaclyn Lovell Histopathology of Trematode (Digenea) Infections in Freshwater Snails (Gastropoda, Pleuroceridae) from Rice Creek, NY	Scott Ward Can C-values Provide Appropriate Estimates of Disturbance Thresholds for Rare Plant Species? Evidence from American Bittersweet (<i>Celastrus scandens</i>) Populations in Western New York	Richard Stevens Excess Evening Light: Delay in Transition to Nighttime Physiology	Juila Rogers Ecological Predictors and Consequences of Non-native Earthworms in Kennebec County, ME
9:15-9:35	Q & A	Jerry Jenkins The Natural History of Woody Plant Flowers	James Fischer The Ecological Consequences of Light Pollution	Timothy McCay Distribution and Status of the Endemic American Grey Soil Worm, <i>Eisenoides lönnbergi</i> , in the Northeast
9:35-9:40		Q & A	Q & A	Q & A
9:40-10:30	Morning Poster Session and Reception with light snacks and beverages			

10:30-12:00	Sunday Concurrent Sessions - Morning II				
	Room C	Room D	Room E	Room F	Room J
	Terrestrial Botany and Plant Ecology II	Avian Ecology and Conservation	Fire-Adapted Ecosystems	Origins and Control of Hemlock Woolly Adelgid	Odonata and Related Orders
Moderator	John Burns	Susan Smith Pagano	Neil Gifford	Patrick Horan	Bryan Pfeiffer
10:30-10:35	Introduction & Overview	Introduction & Overview	Introduction & Overview	Introduction & Overview	Introduction & Overview
10:35-10:55	Jerry Jenkins Visualizing Rare Plant Habitats	Christopher Goguen Video Documentation of the Predator Assemblage at Veery Nests in Northeastern Pennsylvania	Thomas Horton Ectomycorrhizal Fungi from Resistant Spore Banks Support Post-Fire Pines	Patrick Horan Hemlocks, Horticulture, History, and HWA: Exploring the Introduction of the Hemlock Woolly Adelgid into the Eastern US	Pam Hunt Prioritizing Odonata for Conservation Action in the Northeastern US
10:55-11:15	Lindsey Pett Effects of Functional Group Richness of Plants on Invertebrate Diversity in Wetlands	Samantha McGarrigle The Effect of Weather Conditions on Common (<i>Sterna hirundo</i>) and Arctic (<i>Sterna paradisaea</i>) Terns Foraging Patterns	Roze Marie Muzika Disentangling the Complex Fire History of Maine	Nicholas Russo Avian Spring Migration as a Dispersal Mechanism for an Invasive Insect Pest	Nicholas Block Climate-driven Diversity Changes Revealed by a Resurvey of Odonata in Eastern Massachusetts
11:15-11:35	Sarah Pears Windstorm and Salvage Harvest in Northern Mixed Deciduous Forests Change Forest Structure, but Not Plant Community Diversity or Richness	Susan Smith Pagano An Integrated Investigation of Thrush Stopover Biology on the South Shore of Lake Ontario	William Patterson Third-Order Fire Effects: The Value of The Long View in Ecology	Carole Cheah Climate-Change Impacts in the Northeast on HWA and its Coccinellid Predator from Japan, <i>Sasajiscymnus tsugae</i>	Matthew Marshall Odonata in Eastern Massachusetts Exhibit Phenological Shifts Predicted by a Warming Climate
11:35-11:55	Kevin Berend Ecology of Alpine Snowbank Communities of Mt. Washington, NH	David Krauss Foraging Behavior of Migrant Passerines in Urban Parks	Neil Gifford Conservation and Constituency Engagement in an Urban Fire-dependent System	Jayne Boniewicz Mass-Rearing for Community Releases of <i>Sasajiscymnus tsugae</i> for Biological Control of Hemlock Woolly Adelgid	Peter Hazelton Updates and Directions for Odonate Conservation in Massachusetts
11:55-12:00	Q & A	Q & A	Q & A	Q & A	Q & A
12:00-1:30	Lunch (included for those who pre-registered for the conference)				

SUNDAY AFTER LUNCH	SUNDAY APRIL 23, 2017
1:10-1:30	PowerPoint preview/technology check for the afternoon presentations - in the room in which your talk will be given
	Sunday Afternoon I
1:30-3:00	<p>Plenary Session - Rooms D/E</p> <p>A Sensitive Dependence: Place, Time, Change and Resilience in New England Salt Marshes</p> <p>with Sue Adamowicz, Land Management Research and Demonstration Biologist, US Fish and Wildlife Service, Rachel Carson National Wildlife Refuge in Wells, Maine</p> <p>This presentation uses two New England salt marshes to evaluate trends through time and projections into the future. Chaos theory, literature and fine art as well as recent salt marsh lessons inform our journey.</p>
3:00-3:40	Afternoon Poster Session and Reception with light snacks and beverages

Attention NENHC Presenters—Oral and Poster:

Special offer from the *Northeastern Naturalist*

If you submit a manuscript for publication to NENA based on research presented at the 2017 NENHC by December 31st 2017, you will receive a 10% discount (15% for students) on the publication charges. Simply identify your submission as NENHC research in your cover email and you will qualify for the discount.

Mark Your Calendars and Plan Ahead!

The 2018 Northeast Natural History Conference

will be in Burlington, Vermont

Friday April 13th–Sunday April 15th

3:40–5:30 Sunday Concurrent Sessions - Afternoon II					
	Room C	Room D	Room E	Room F	Room J
	Biodiversity Conservation in the Northeast	Conserving Native Carnivores	Conservation and Ecology of Reptiles and Amphibians II	Introduced Plants in New England: Management and Conservation	Challenges and Advances in Disease Vector Biology in the 21st Century
Moderator	Thilina Suringhe	Rory Carroll	Brian Bastarache	Gaytha Langlois	Molaei Goudarz
3:40–3:45	Introduction & Overview	Introduction & Overview	Introduction & Overview	Introduction & Overview	Introduction & Overview
3:45–4:05	Jeff Doser Analysis of Seasonal Temporal Variation of Soundscapes in Western New York	Dallas Huggins & Eric Aldrich On the Trail of Bobcats: Tracking and Camera Traps to Study <i>Lynx rufus</i>	Matthew Tucker Effects of Habitat Fragmentation on the Population Genetics of <i>Plethodon cinereus</i>	Qin Leng <i>Phragmites</i> : A Troubling Invader for Some but Important Resources for Others	Molaei Goudarz A Feathery Tale of Close Encounters: Mosquitoes, Birds, and Human Health
4:05–4:25	Gregory Keller Multiscale Effects of Landscape Heterogeneity and Fragmentation on Edge-nesting Birds in Northern MA	Jacqueline Friar Tracking Recovery of River Otter in Western NY since 2002 Using Sign Surveys and Occupancy Modelling.	Scott Smyers & Kyle Cormier Breeding Season & Larval Development Variability of Wood Frogs from the White Mountains, NH, and Wachusett Mt., MA	Allison Hubbard Assessment of Metal Concentrations in <i>Lythrum salicaria</i> (Purple Loosestrife) at Three Rhode Island Sites Using ICP-MS Analysis Techniques	Phillip Armstrong Mosquitoes and Zika Virus: Assessing the Threat
4:25–4:45	Kathy Michell Wildlife Biologists and Rehabilitators: Moving from Conflict Towards Collaboration	Chee Pheng Low Anthropogenic Drivers of Space Use among Coyote, Gray Fox, and Fisher on Fort Drum Military Installation, New York	Amber Pitt Using Historical Data and eDNA Surveys to Rapidly Evaluate Hellbender Population Decline	Gaytha Langlois A New Morphological Discovery Sheds Light on the Difficult Management of the Invasive <i>Cabomba caroliniana</i> (Carolina Fanwort) in New England Freshwater Ecosystems	Kirby Stafford Fighting the Bite: Tick-Associated Diseases and Integrated Tick Management
4:45–5:05	Jay Cordeiro MA Audubon Society's Spadefoot Toad (<i>Scaphiopus holbrookii</i>) Headstart Program: A Place-Based Education Project for Cape Cod School Children	Rory Carroll Stress in the City: Influence of Landscape-scale Development on Chronic Stress Levels in Bobcats	Bryan Windmiller Factors Affecting Growth Rates of Blanding's Turtles in Captivity and Survival Rates Post-Release	Raheem Champion Geomapping the Distribution of Cultivated <i>Metasequoia glyptostroboides</i> Trees in the Northeastern United States	Kacie Chern Local Prevalence and Strain Diversity of <i>Borrelia burgdorferi</i> in <i>Peromyscus leucopus</i> and <i>Ixodes scapularis</i>
5:05–5:25	Pam Hunt Identifying Regional Species of Greatest Conservation Need	Olivia Asher Spatial Variation in the Diet of New York City Coyotes	Mariah Fossella Distribution of <i>Plethodon cinereus</i> Color Morphs in Massachusetts: 40 Years Later	Q & A	Scott Williams Diversity and Dilution: Impacts of Medium-Sized Mammal Diversity on <i>Borrelia burgdorferi</i> Prevalence in Fragmented and Unfragmented Habitats in Connecticut
5:25–5:30	Q & A	Q & A	Q & A		Q & A
5:30–6:00	Take down for Day 2 scientific posters				
6:00–8:00	Plated dinner and socializing - ticketed event				
	Thank you for participating in NENHC 2017. We hope you enjoyed the conference and wish you a safe journey home.				

SATURDAY POSTER PRESENTATIONS DIRECTORY

No.	Presenters	Title	
1	Alexander Manos	Water Quality Assessment of the Effects of a Water Pollution Control Facility in Vernon, Connecticut	
2	Kirsten Martin	Water Under the Bridge: E. coli Monitoring of the Scantic River (CT)	
3	Renamargaret Kousournas	The Impact of Acidity on <i>Lemna minor</i> Respiration and Chloroplast Count	
4	Shanelle Haughton	Pharmaceutical Pollution: Exploring the Effects of Aspirin and Amoxicillin on Chloroplasts of <i>Lemna minor</i>	
5	James Wolfe	Chloride and Heavy Metals in Natural and Impounded Water Bodies of Allegany County, NY	
6	Sue Lindsey	Hagar Austin	Spatial and Temporal Distribution and Abundance of Microplastics in Lake Champlain Long-Term Monitoring Samples
7	Sadie Brown	A Survey of Microplastics in Wastewater Treatment Plant Effluent in the Lake Champlain Basin	
8	Alexandra Putnam	Microplastic Biomagnification in Invertebrates, Fish, and Cormorants in Lake Champlain	
9	Alberto Mimo	Population Ecology and Distribution of the Freshwater Crustaceans in Connecticut Including Some Notes Regarding their Re-Population in Connecticut after the Ice Age	
10	Mitchell Monini	Aquatic Macro-Invertebrate Distribution Along a Hydrogen Sulfide Gradient in Brimstone Creek, NY	
11	Laura Beimfohr	Ecological Study of Temperate and Tropical Anuran Breeding Pools	
12	Emily Donahue	Impacts of Urbanization on Pond-breeding Amphibians: Variation of Egg-mass Abundance in Southeastern Massachusetts	
13	Jacqueline Toomey	Habitat Association of Northern Water Snakes Along the Urban–Rural Gradient	
14	Sarah Jones	Occupancy of the Common Garter Snake in Urban and Rural Wetland Habitats of Southeastern Massachusetts	
15	Melissa Laubi	Evidence for <i>Chrysemys picta</i> (Eastern Painted Turtle) as a Seed Disperser in Southeastern MA Ponds	
16	Sydney Quirk	Seed Dispersal in a Massachusetts River by <i>Chrysemys picta</i> (Eastern Painted Turtle)	
17	Elizabeth Bastiaans	Fluctuating Asymmetry in Plastron Scutes in a Historical Population of Wood Turtles (<i>Glyptemys insculpta</i>)	
18	Donald Padgett	Initial Assessment of a Red-Eared Slider Invasion in a Southeastern Massachusetts Pond	
19	Aswini Pai	By Clone or Seed? A Look at Population Establishment and Growth of <i>Acorus calamus</i> , a Wetland Plant	
20	Michelle Bissett	Sticky Seeds in Podostemaceae: To Be (Dispersed) or Not To Be?	
21	Maria Zambuto	Comparing Intraspecific and Interspecific Competition of Spotted Knapweed (<i>Centaurea stoebe</i> L. subsp. <i>micranthos</i>) and Orchardgrass (<i>Dactylis glomerata</i>)	
22	Jinyan Guo	Micro-morphological Data Indicate that Sepals of <i>Iris cristata</i> (Iridaceae) Provide Visual Cues and Tactile Stimuli for Pollinator	

23	Robert	Bertin	Climate Change and Flowering Phenology in Franklin County, Massachusetts
24	Monica Steven Stephen Tara	Dore Haight Bretscher Latvin	The SUNY Virtual Herbarium Network: Increasing Access and Improving Botanical Education
25	Andrea	Silvestri	The Campus Flora Project: Natural History for Research, Teaching, and Conservation
26	Mary Beth	Kolozsvary	Engaging Undergraduates in Collaborative Learning, Research, and Educational Opportunities to Promote Awareness and Combat Threats from Invasive Species
27	McKenzie	Wybron	Using Goats to Control Invasive Plant Species
28	Corinne	Evans	Untangling the Relationships Between Plant Invasions, Land-Use History, and Soil Characteristics
29	John	Coacci	Comparing Decomposition Rates of Nitrogen-Fixing and Non-Nitrogen-Fixing Invasive Species
30	Timothy	Gardner	Forest Bird Populations in Massachusetts: Breeding Habitat Loss and Other Influences
31	Connor	Ramsdell	Assessing the Quality of Ruffed Grouse Habitat in a Managed Early-Successional Mixed Hardwood Forest at Lake Alice WMA Chazy, NY
32	Chad	Hammer	Survey of Artificial Nest Boxes and Tree Cavities for Secondary Cavity Nesting Avifauna in Northern New York
33	Robert	Craig	Over-Wintering Bird Use of Roost Boxes in Fragmented and Continuous Forests in the Adirondack Mountains
34	Douglas	Robinson	Environmental Correlates of American Crow Nest Placement and Incubation Commencement
35	Jocelyn	Rua	Title: Demographic Trends of the Piping Plover (<i>Charadrius melodus</i>) at Allens Pond in Dartmouth, Massachusetts, from 2008 to 2016
36	Brikena	Gjeci	Does the Pesticide Imidacloprid Change Nicotinic Acetylcholine Receptors in Honeybees?
37	Michelle	Jennette	Changing Diet: High Fructose Corn Syrup (HFCS) Changes Glycolysis Genes when Fed to Honeybees
38	Kevin	Curry	Site Fidelity of <i>Calopteryx maculata</i> (Ebony Jewelwing) During Two Breeding Seasons along South Brook
39	Alex	Baranowski	How does the Fear of Predation Affect the Growth and Development of Luna Moth (<i>Actias luna</i>) Larvae?
40	Mary	Mallinger	A Native Lepidopteran is Impacted by Host Defenses Induced by the Hemlock Woolly Adelgid
41	Elizabeth	Bastiaans	The Effect of Water Availability on Ejaculate Size and Oviposition in Bean Beetles (<i>Callosobruchus maculatus</i>)
42	Andre-Anne Dave Alex	Chenaille Nardelli Whiston	A Fine-Scale Examination of Abiotic Factors that Correlate with Growth of <i>Larix laricina</i> in an Adirondack Peatland

SUNDAY POSTER PRESENTATIONS DIRECTORY

No.	Presenters	Title
1	Kirsten Martin	Letting Nature Take Over: The USJ Grasslands Project
2	Rachel Silva	The Effect of Increasing Water Temperature on Respiration Rate and Feeding Behavior in Nymphal Dragonflies
3	Sam Heraghty	Patterns of Native Bee Diversity: Comparison of Sampling Methods and Effects of Floral Resources and Habitat
4	Hannah Loo	Examination of Multiple Infections of Wolbachia in Free-Living, Enslaved, and Slavemaking Formica Ants
5	Merin Varghese	Screening and Optimizing Microsatellite Loci for Genotyping Formica ants
6	Tulpen Hansen-Schwoebel	Spatial Distribution of Beech Blight Aphids at Multiple Levels
7	Robina Nagel	Identifying the Fungal Associates of Honeydew Deposits from the Beech Blight Aphid
8	Jeremy Hall	Impact of Agricultural Land-use Patterns on Tick Distributions at a Local Scale
9	Emily Kubicke	Relative Importance of Weather and Climate for Tick Distributions at a Local Scale
10	Sylvia Halkin	Do Eastern Gray Squirrels Target Theft-Averting Responses to Recent Pilferers?
11	Karli Walczewski Searle	Why Squirrel-Proofing Your Feeder Often Isn't Permanent: How Squirrels Learn to Overcome Obstacles
12	Daniel Artivan Doran Cherwin	Variable Distributions in Gray Versus Black Eastern Gray Squirrels in Urban Habitats
13	Lucas Krauss	Monitoring Canine Parvovirus (CPV) Prevalence in Vermont Carnivore Populations through Scat Analysis
14	Brielle Manzollillo	Human Perceptions of the Coyote in New York City
15	Jared Ortega	Distribution of Fishers, Coyotes, Bobcats, and Foxes in Westchester County
16	Cheyenne Lee	A Modern Twist on an Ancient Practice, Use of 3D Printers in Taxidermy
17	George Raxworthy	Impacts of Deer Overpopulation on Red Oak Regeneration at Mianus River Gorge
18	Sasha Petrycki	The Effects of Land-Use History and Natural Disturbance on Changes in Tree Species Composition
19	Hannah Chase	How Land Use Affects Tree Species Diversity
20	Catarina Torres	Tree Seedling Dynamics and Restoration in Response to a Simulated Emerald Ash Borer Outbreak
21	Jeanette Gray	Effects of Forest Changes on Understory Tardigrade Populations in Waldo County, Maine

22	Briana	Rago	Investigating the Distribution of <i>Minibiotus intermedius</i> and <i>Macrobotus furcatus</i> in Acadia National Park
23	Sarah	Neitzel	Determination of <i>Diphascon pingue</i> Subspecies in Maine via Modern Morphometrics
24	Sandra	Buerger	Influence of Subinhibitory Concentrations of Ampicillin on Bacterial Community Composition
25	Isabela	Yepes	Functional Assessment of Several Freshwater Wetlands in the Mianus River Watershed
26	Stephen Amanda	Girard Deguire	Insights on Buffer-zone Delineation in Wetland and Stream Conservation Efforts
27	Robert Andrew	Knuth Lavoie	Ecological Factors Influencing Vernal Pool Productivity
28	Joshua	Schwartz	Is it One Call or Two? Perception of Inter-pulse and Inter-call Intervals in the Gray Treefrog, <i>Hyla versicolor</i>
29	Michael	Tierney	First Steps in a Watershed-Scale Project to Examine and Mitigate Road Mortality for Amphibian and Reptile Populations
30	Douglas	Bishop	Genetic Population Structure and Connectivity of Creek Chub in the Poultney River Watershed and Adjacent Networks
31	William	Grey	Abundance of the American Eel (<i>Anguilla rostrata</i>) in a Stream and Pond Habitat Adjoining Cape Cod Bay
32	Matthew	Bettencourt	Assessing Impact of Stream Barrier Removal using Elver Density and PIT Tagging of <i>Anguilla rostrata</i>
33	Leela	Stalzer	Effects of Culverts on Stream Connectivity and the American Eel (<i>Anguilla rostrata</i>) in two Hudson River Tributaries
34	Paola	Fernandez	Seasonal and Spatial Pattern of the Marine Larval Fish Community in Long Island Sound
35	Adan	Isa	Caprellid Species of Outer Island, Branford, CT
36	Selina	Westberg	Effects of Resource Availability on Fecundity of Asian Shore Crabs (<i>Hemigrapsus sanguineus</i>) in Rocky Intertidal Habitats of Southern New England
37	Victoria Tyler	Frew Tedesco	Trophic Position of Invasive Asian Shore Crabs at Sites with Differing Prey Densities in Southern New England
38	Kyle	Welsh	Endangered Species Conservation in the Northeast Through the Cooperative Endangered Species Conservation Fund
39	Frances Ryan	Murray Colling	Documenting the Extended Leaf Phenology of Invasive Shrubs Using a Citizen Science Approach