

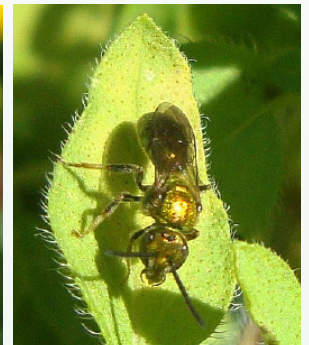
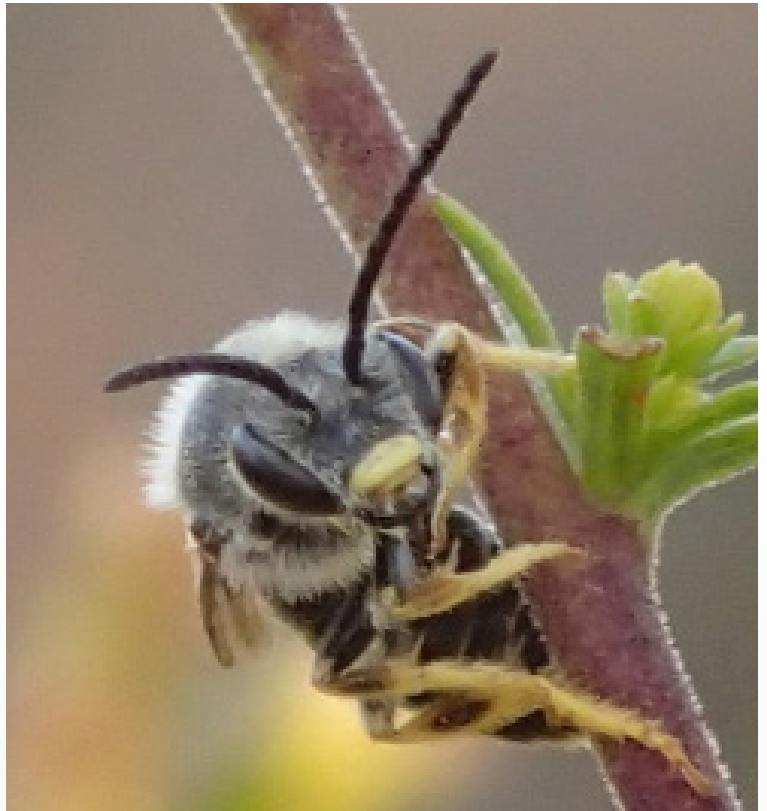


2017 Eagle Hill Natural History Science Seminars . . .
. . . on the coast of eastern Maine

NATIVE BEES AS POLLINATORS: DIVERSITY, ECOLOGY, CONSERVATION, AND HABITAT ENHANCEMENT

July 9 – July 15, 2017

Concerns about native bees and their crucial role in crop pollination (e.g., wild blueberry) have prompted increased attention in these important insects, of which Maine has about 280 species. This seminar will emphasize challenges in native bee conservation, and is planned to be of interest to land managers, land trusts, natural historians, foresters, teachers, students, gardeners, landscape designers, growers, and artists. We will explore relationships between common native bees and wild and cultivated plants. During field excursions, participants will develop skills in observing native bees on flowers, photographing insects, and quantifying pollinator resources at blueberry farms, gardens, natural areas, and other habitats. Lectures will feature bee biology, diversity, and conservation, some basics of plant reproductive biology, flowers as pollen and nectar sources, mating sites, nest habitats, competition with introduced bees, enhancing pollinator habitat, potential effects of climate change, and impacts of pesticides, disease and pests. Lab sessions, using microscopes and important online bee keys, will feature bee identification to genus, and a close look at plant resources. Participants can prepare a collection of common bees for their own reference, and will take home a better understanding of how to provide pollinator habitat for conservation lands, commercial and home applications.



about the instructors

Dr. Sara L. Bushmann (sara_bushmann@umit.maine.edu) is a teacher and applied agricultural ecologist whose focus is Maine's wild bees and the plants they pollinate. Her current research involves a survey of wild bees found on Maine's islands. For two years she has served as guest instructor for this native bee seminar at Eagle Hill.

Kalyn Bickerman-Martens (kalyn.bickerman@umit.maine.edu) ... is a PhD candidate in Ecology and Environmental Sciences at the University of Maine and her work focuses on the health of Maine's bumble bees and wild blueberry pollination. Her research interests include disease ecology and the natural history of Maine.